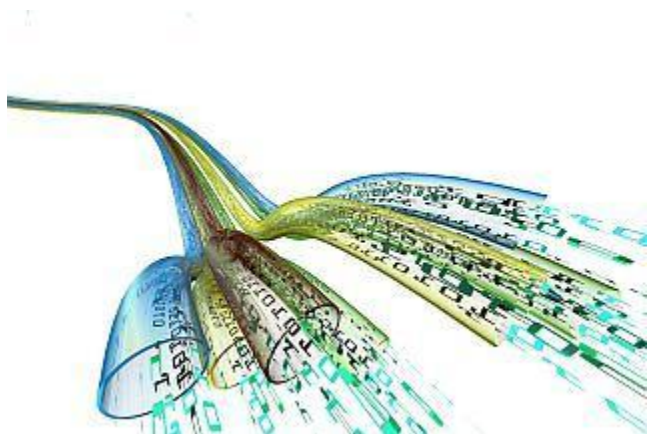


# Home

## Welcome to CSIRO's Data Access Portal Help Documentation



### CSIRO Research Data Service

The CSIRO Research Data Service (RDS), working with research partners, is enhancing the current data repository to improve usability.

#### What is RDS?

The objective of the CSIRO Research Data Service is to ensure that the organisation captures and manages the right data to support collaboration and scientific integrity.

CSIRO is a partner in the [Australian National Data Service](#). The RDS team contributes to ANDS projects and initiatives.

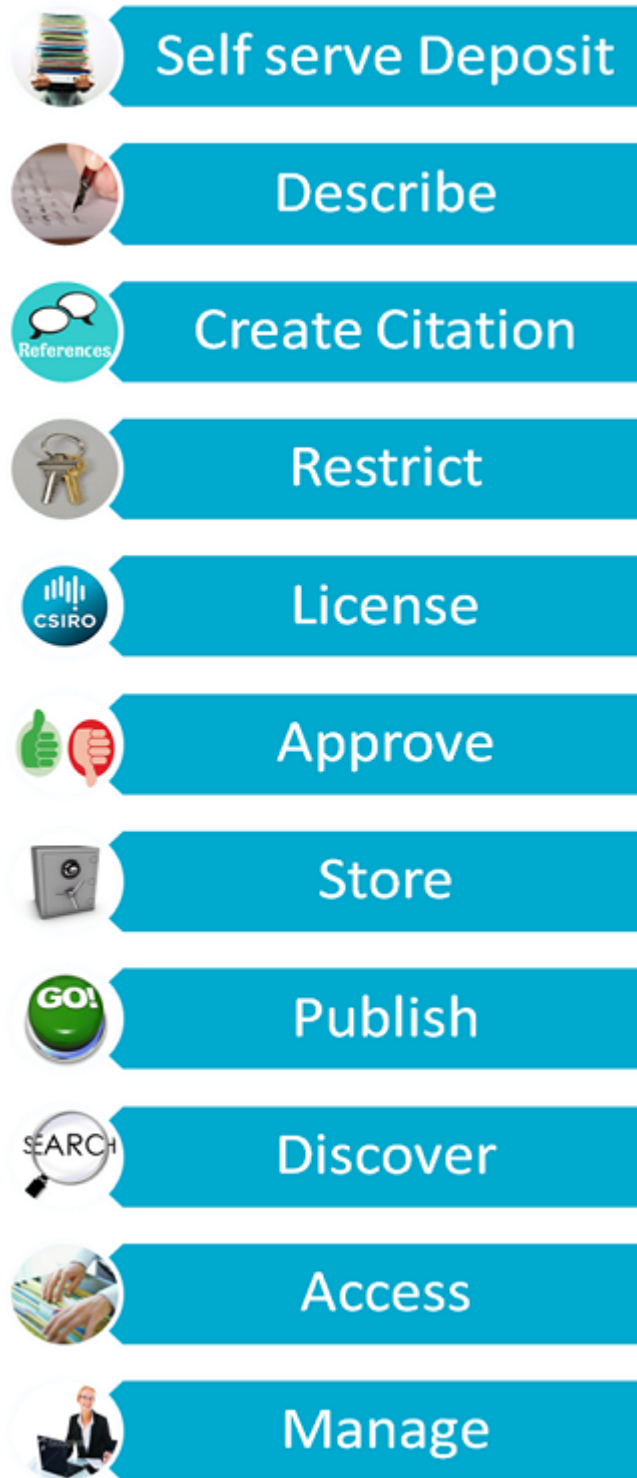
#### Why is it needed?

- to ensure research data under the custodianship of CSIRO is securely stored, easily located and where appropriate, accessible to others for reuse
- to manage data in an increasingly collaborative research environment;
- to respond to government and funding body requirements to share the data rising from publicly funded research

#### What does the RDS do?

The Research Data Service has been established to enable you to **Discover, Manage and Share** data and the technology that has been developed to achieve this is the [Data Access Portal](#) . Source Code from version 2.3 of the Data Access Portal is available as Open Source on [SourceForge](#).

The Data Access Portal has the [following functions](#):



## Recently Updated

[Statistics](#)

Nov 04, 2019 • updated by Lawrence, Mikaela (IM&T, Waite Campus) • view change

[image2019-11-4\\_16-3-4.png](#)

Nov 04, 2019 • attached by Lawrence, Mikaela (IM&T, Waite Campus)

[image2019-11-4\\_16-2-13.png](#)

Nov 04, 2019 • attached by Lawrence, Mikaela (IM&T, Waite Campus)

[image2019-11-4\\_15-58-12.png](#)

Nov 04, 2019 • attached by Lawrence, Mikaela (IM&T, Waite Campus)

[image2019-11-4\\_15-57-43.png](#)

Nov 04, 2019 • attached by Lawrence, Mikaela (IM&T, Waite Campus)

[image2019-11-4\\_15-35-41.png](#)

Nov 04, 2019 • attached by Lawrence, Mikaela (IM&T, Waite Campus)

[image2019-11-4\\_15-20-48.png](#)

Nov 04, 2019 • attached by Lawrence, Mikaela (IM&T, Waite Campus)

[image2019-11-4\\_15-20-22.png](#)

Nov 04, 2019 • attached by Lawrence, Mikaela (IM&T, Waite Campus)

[image2019-10-15\\_17-50-55.png](#)

Oct 15, 2019 • attached by Lawrence, Mikaela (IM&T, Waite Campus)

[image2019-10-15\\_17-47-49.png](#)

Oct 15, 2019 • attached by Lawrence, Mikaela (IM&T, Waite Campus)

[image2019-10-15\\_17-45-26.png](#)

Oct 15, 2019 • attached by Lawrence, Mikaela (IM&T, Waite Campus)

[image2019-10-15\\_17-36-38.png](#)

Oct 15, 2019 • attached by Lawrence, Mikaela (IM&T, Waite Campus)

[image2019-10-15\\_17-34-52.png](#)

Oct 15, 2019 • attached by Lawrence, Mikaela (IM&T, Waite Campus)

[Data Preservation Principles](#)

Sep 13, 2019 • updated by Cook, Sue (IM&T, Kensington WA) • view change

[Data Preservation Principles](#)

Sep 13, 2019 • updated by Lawrence, Mikaela (IM&T, Waite Campus) • view change

Navigate space